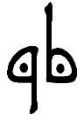


## Jewelry Pouch



pattern by term @ Quilt Bites



### **Fabric:**

Outside of pouch (18" circle): 1 fat quarter

Inside of pouch (18" circle): 1 fat quarter

Underside of inside pockets (13" circle): 1 fat quarter

Topside of inside pockets (13" circle): 1 fat quarter

Bottom of pouch (5 3/4" circles): 3 layers of batting large enough to cut out 5 3/4" circles

### **Supplies:**

Matching thread

Scraps of fusible interfacing

Seam gauge

Straight pins

Fabric scissors

Fabric marker

2 cords, each 26" long

Safety pins

Ruler

**Cutting the pieces:** Cut with your fabric scissors.

1. Take 18" circle pattern piece and cut one circle from the outside of pouch fabric. Unpin 18" pattern piece from fabric and pin it onto the inside of pouch fabric and cut one circle. Set these two circles aside.

2. Take the 13" circle pattern piece and cut one circle from the underside of inside pockets fabric. Unpin and then pin the 13" pattern piece onto the topside of inside pockets fabric and cut one 13" circle. Set these two 13" fabric circles aside.

3. Cut 3 – 5 3/4" circles from scrap batting. Set aside.

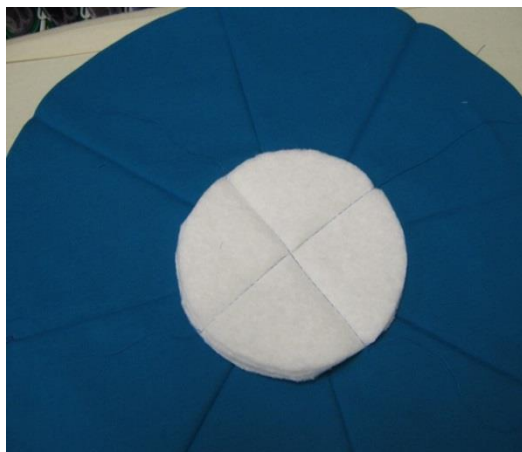
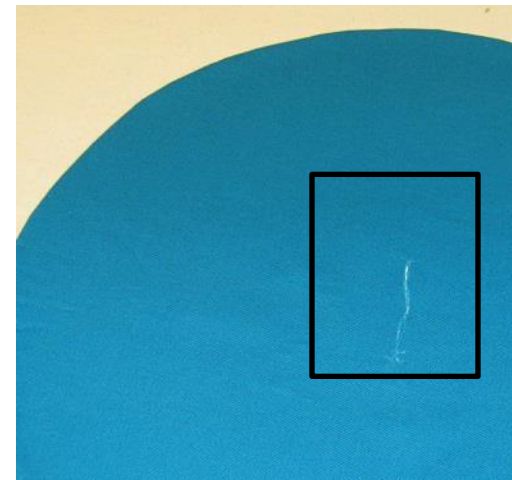
## **Putting it together:**

4. **Preparing for the buttonholes:** Take the outside of the pouch 18" circle and fold in half. Press. Set your seam gauge to 1" and measure 1" from edge on the fold and make a mark to indicate the top of a buttonhole. While the gauge is set at 1", mark the top of the buttonhole on the other side of the fold. Move the seam gauge to 1 ½" and mark the bottom of the buttonholes, directly under the 1" top marks. Using two scraps of fusible interfacing, cut rectangles just large enough to cover the buttonhole marks. On the *wrong side* of the outside of the pouch 18" circle, press the interfacing in place. Stitch the buttonholes. Cut buttonholes open.



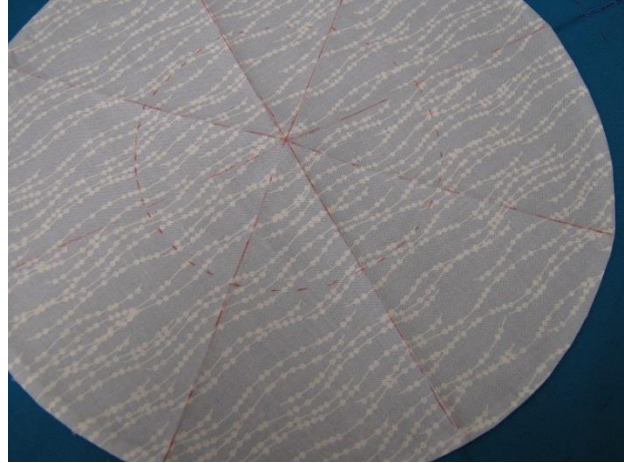
5. **Stitching the 18" circles together:** Take the 2 – 18" circles and place them right sides together. Pin and stitch ¼" around the outer edge. Cut a slit in the middle of the 18" inside of pouch fabric only. Pull the outside of the pouch fabric through the slit until both right sides are facing out. Pull the outer edges apart all the way around. Roll the edges so that the seam lies flat. Press and then topstitch around the edge about 1/8".

6. **Stitching the 13" circles together:** Take the 2 – 13" circles and place them right sides together. Pin and stitch ¼" around the outer edge. Cut a slit in the middle of the 13" underside of pocket fabric only. Pull the topside of pockets fabric through the slit until both right sides are facing out. Pull the outer edges apart all the way around. Roll the edges so that the seam lies flat. Press and then topstitch around the edge about 1/8".



7. **Placing the 3 layers of batting:** Press the outside 18" circle in quarters. Place the 3 layers of batting – 5 ¾" circles in the center of the 18" inside pouch circle, covering the slit. Use a basting stitch to stitch these layers in place.

8. **Placing the 13" circles:** Fold and press the inside 13" circles into eighths. Using the ruler and fabric marker, draw lines along the pressed folds on the topside pocket fabric. Take the 5 3/4" circle pattern piece and place it in the center and draw lines along the edge. (See illustration at right.) Stitch around the center batting layer. Pull out the basting stitches. Now stitch across the 13" pocket circle, following the marks. ***Backstitch at the beginning and the end of the circle.***



9. **Stitching the cord channel:** Using the seam gauge, place the top of the gauge just inside the top of the buttonhole and adjust the slide to the edge of the outside of the 18" circle. Mark this all the way around the circle. Then move the top of the seam gauge to the inside of the bottom of the buttonhole and adjust the slide to the outside edge of the circle. Mark around the entire circle. Now stitch on these lines.



10. **Inserting cords:** Using a safety pin, pin one end of one 26" cord and starting at one side of the pouch, feed the cord through the channel and out the buttonhole you started at. Using a safety pin, pin one end of the other 26" cord and starting at the opposite side of the pouch, feed the cord through the channel and out the buttonhole you started at. Pull each cord to cinch pouch. Secure the ends of the cords so that they will not pull through.

